

Data:marker

Quick Reference Sheet

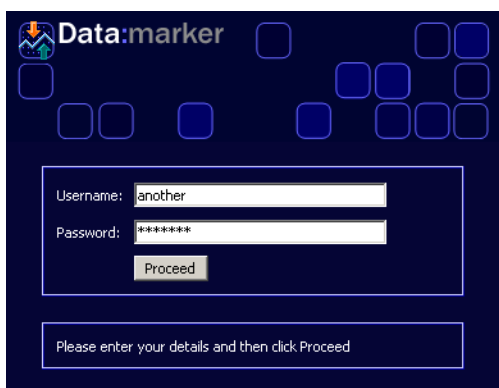
Viewing the Market



Getting Started

To log on to Data:marker:

1. Start your **Microsoft Internet Explorer** by double clicking on the icon on your desktop.
2. Open the **Data:marker** site at www.datamarker.com



3. You will be presented with a Log On screen. Type in your **user name** and **password** in the appropriate fields.
4. Now click on **Proceed** to continue.

Data:marker Market views cont.

Green Screen Dealing Pages

The **Green Screen Dealing** views displays a list of live data pages with real time price updates.

Analysis

The **Analysis** view gives the user access to historical data for each product in both tabular and graphical format.

Organising the Live Data windows

There is no limit to the amount of **Live Data** pages that you can display at the same time. You can organise multiple **Live Data** windows by using the **Tile Windows** or **Cascade Windows** icons at the top right of the main window.



Displaying Commentary Pages

Most of the products have a **Commentary** section which contains a rolling list of commentary and headlines generated by the **Tullett Prebon** broking desks.

To access the **Commentary** pages:

- Click on a product from the left navigation menu. From the drop down menu that appears; select the **Commentary** link.
- or if a product is already displayed in the main screen, select the **Commentary** tab at the top of the page.

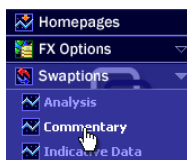
Date	Headline	Source
19 Nov 2003 10:06	STERLING Trades 18/11/03	Swaptions
19 Nov 2003 10:04	EURO Trades 18/11/03	Swaptions
18 Nov 2003 10:54	EURO Trades 17/11/03	Swaptions
13 Nov 2003 10:20	STERLING Trades 12/11/03	Swaptions
13 Nov 2003 09:48	EURO Trades 12/11/03	Swaptions
13 Nov 2003 09:38	USD Trades 12/11/03	Swaptions

To display the full **News** story:

- Use the **check boxes** in the commentary banner to select the products that you would like to display headlines on.
- When the headlines appear; click on your chosen story headline with the mouse, another window will open which will display the headline in the header and the full **News** story or attachment underneath.

Data:marker Market views

Data:marker has four different market views for some of it's products. These views are accessed from the product drop-down menus in the main navigation menu.



Commentary

The **Commentary** view displays a rolling list of the latest commentary and headlines generated from the broking desks of each products.

Dealing Prices

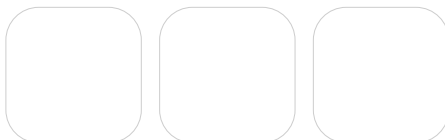
The **Dealing Prices** view displays a list of live data pages for the **FX Options**, **GDRs**, **Eurobonds**, and **Repos** products with real time price updates.

Indicative Data

The **Indicative Data** view displays a list of Indicative data pages for the **FX Options**, **Swaptions**, **Caps & Floors**, **Bond Options**, **Exchange Options** and **Government Bond** products.

Client Version

July 2005 Edition
Copyright ©
Collins Stewart Tullett plc.



Displaying Dealing Prices Pages

Data:marker displays the different Dealing Prices for **FX Options, GDRs, Eurobonds, and Repos** in separate page display windows.

To navigate between page displays in **Data:marker**:


- To navigate back to the **Main window** click on the hyperlink on the left of the page display banner.
- You can also use the **Windows®** Task Bar at the bottom of the screen to swap between windows.

Changing between pages in the same product area


All the pages in the same product area are listed in the **Page** drop down menu, you can swap between pages by choosing a new page in the drop down menu.

Changing the Font Page

You can make the font size bigger or smaller in the page display by using the **Font** drop down menu.

Contact Icon 

The **Contact** icon on the page display opens a window which contains all the contact information for the brokers on that desk.

Active Orders only 

When you have a large number of instruments to monitor you can select the **Active Orders Only** icon at the top right of the page display to view only the instruments that have an active order against them.

This function toggles **on** and **off**, so to switch back to view all instruments click on the icon again.

Add page to Homepage 

The **Add page to Homepage** icon allows you to add the page to the homepage customisable views. See the **Adding a View to the custom Homepage** section for details.

Working with Indicative Data Pages

Some of the products has an **Indicative Data** section which displays a list of Indicative data pages with real time price updates.

To access the Indicative Data pages:

- Click on the **Indicative Data** link from within your choice of product on the left navigation menu
- or if a product is already displayed in the main screen, select the **Indicative Data** tab at the top of the page.
- Then click on your choice(s) of page and a separate pop-up window will appear with the Indicative rates.

Changing the Font Size

The font size can be changed from **Small** to **Normal** or **Large** by using the **Font Size** drop down at the top of the window.

Address:

Cable House
54 - 62 New Broad Street
London EC2M 1ST
United Kingdom

Internet:

<http://www.tullib.com>

Product web site:

<http://marker.tullib.com>

Working with Indicative Data Pages cont.

Accessing Historical Data from Indicative Data views

As a quick alternative way to using the **Analysis** function to access historical data you can click on a field in **Indicative Data** view.



Instrument	Period	Type	Bid	Offer	B	Size	O	Size	Last	Last Size
CORP € GC SW	TTL									
CORP € GC SM	TTL									
CORP € GC GDM	TTL									

To access historical data for a selected field:

1. In the **Indicative Data** view click on your selected field; the dialog similar to the one below appears.
2. Select the **Start** and **End** dates either by typing in the format **dd-mm-yyyy** or using the calendar drop downs, or leave it blank.
3. Then choose either a graphical display or data table by selecting one of the radio buttons.
4. Click on the **Go** button to display the results.

Green Screen Dealing Pages

Data:marker displays the Green Screen product pages in separate Page Display windows.

To navigate between page displays in **Data:marker**:

- To navigate back to the **Main Window** click on the hyperlink on the left of the page display banner.
- You can also use the **Windows®** Task Bar at the bottom of the screen to swap between windows.

Changing between pages in the same product area

All the pages in the same product area are listed in the **Page** drop down menu, you can swap between pages by choosing a new page in the drop down menu.


Auto-sizing Icon 

The **Auto-sizing** function on the page display is on by default, this allows the contents of the data table to resize automatically as the user resizes the window. You can switch off the auto-sizing by clicking the button once.

This function toggles **on** and **off**, so to switch the auto-sizing back on click on the icon again.

Contact Icon 

The **Contact** icon on the page display opens a window which contains all the contact information for the brokers on that desk.

Add page to Homepage 

The **Add page to Homepage** icon allows you to add the active page to the homepage customisable views. See details in **Adding a View to the custom Homepages** section.

E-mail:

TradingSystemsServices@tullib.com

Telephone:

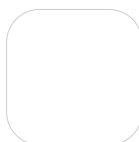
[+44] (0)20 7827 3702



Data:marker

Quick Reference Sheet

Functionality



Analysis

Some of the products have an **Analysis Criteria** selector which gives you access to historical data in both tabular and graphical format.

To access the Analysis pages:

- Click on the **Analysis** link from within your choice of product on the left navigation menu
- or if a product is already displayed in the main screen, select the **Analysis** tab at the top of the page.

Please note: Historical data from the products can be accessed from any product analysis screen.

Analysis Criteria Selector

1. First choose whether you want to display the result as a graph or a data table by selecting the correct button.
2. Then type a title of the graph or data table which will identify the search in the favourites list if you choose to save the criteria, or leave it blank.
3. Select the **Start** and **End** dates either by typing in the format **dd-mm-yyyy** or using the calendar drop downs.
4. Then add the criteria for the first graph/table by clicking on the first **Find...** button. A pop-up dialog will appear (similar to the one below) to select a contract.

5. From the dialog choose a **Product** from the first drop down menu and a **Contract Name** from the second drop down menu.

6. From the grid show use your mouse to click on your choice of contract (as shown above).
7. The chosen contract will now appear in the criteria selector form.
8. Repeat stages 4 to 7 again to add the second graph.
9. You can add a third graph by clicking the third **Find...** button or click on the **Comparison** radio button and choose from the comparison drop down that appears.
10. Click on the **Go** button to display the results.

Client Version

July 2005 Edition
Copyright ©
Collins Stewart Tullett plc.



Saving Analysis Criteria to a Favourites List

Once you have selected the criteria in the **Analysis** window you can save the configuration to the **My Favourites** list. This enables you to recall the same criteria in one click.

To save your criteria to Favourites:

- In **Criteria Selector** you must name the configuration
- Once you have filled in the criteria, click on the **Save to Favourites** button
- The saved criteria name will appear in the **My Favourites** list at the bottom of the page.

Recalling your Favourites

To recall a previously saved graph/data table from the **Favourites** list click on the **Select** button next the favourites name.

To re-populate the **Criteria Selector** form with a saved favourite so that you change the details click on the title of the favourite.

Deleting your Favourites

To delete a favourite click on the **X** button next to the title of the favourite.

Table Functions

When historical data is displayed in a tabular format each table is displayed on it's own tab. Click on the tabs at the top of the window to switch between the tables.

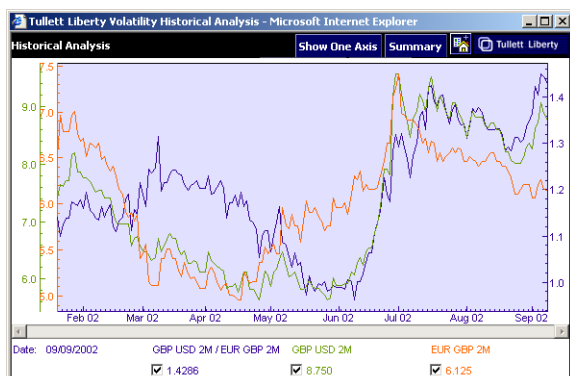
Date	Bid	Ask	Mid
21 Jan 2002	6.3500	6.6500	6.5000
22 Jan 2002	6.7500	7.1500	6.9500

Changing the Font Size

The font size for any table view can be changed from **Small** to **Normal** or **Large** by using the **Font Size** drop down at the top of the window.

Graph Functions

The historical data can be displayed in **Graphical** or **Tabular** format. The graphical display has the following functionality:



Zoom In Function

To zoom into a graph for more detail use your **left** mouse button to click on the graph, then drag over the area of the graph that you want to see more detail on. To zoom further repeat the process. To reset the graph to its original view use your **right** mouse button to click on the graph.

Showing or Hiding Graph Lines

When you have more than one graph lines on view in the same window you may wish to hide the graph lines of one or two of the contracts. All the graph lines are labeled at the bottom of the window with the corresponding graph colour. Click on the **check box** next to the value to hide or reveal the graph line for easier analysis. When just one graph line is displayed it is possible to add a grid to the graph.

Show One Axis Button

By clicking on the **Show One Axis** button you can switch your view so that all the graphs are displayed using the same y axis values. This will display the graphs for better comparison.

Summary

The **Summary** button displays a data table summarising high, low and last values of each of the graphs on separate tabs of the window. Clicking on each tab switches to the summary of each graph.

Mouse-over Values

You can view the exact values in the graph by rolling your mouse over the graph when it is selected, the date is displayed on the bottom left of the window and value is displayed next to the **show/hide** check box.

Address:

Cable House
54 - 62 New Broad Street
London EC2M 1ST
United Kingdom

Internet:

<http://www.tullib.com>

Product web site:

<http://marker.tullib.com>

Icon Reference

- Hide / Show Navigation menu**
Displays or Hides the Navigation.
- Data:marker Product pages**
Displays the drop down menu for each product.
- Open in New Window**
Opens the active view in a separate floating window.
- Add page to Homepage**
Adds the active view into the homepage customisable views.
- Delete View**
Deletes the selected view from the favourites list.
- Cascade Windows**
Cascades the pop-up windows into a stack still displaying the window title.
- Tile Windows**
Displays all the pop-up windows equally without overlapping.
- Auto-sizing for Green screens**
Allows the contents of the Green Screen data table to resize as the user resizes the window.
- View Active Orders for Dealing Price Pages**
Allows you to monitor only instruments that have an active order against them in the Dealing Prices Pages.
- My Blotter**
Allows the user to switch to the **Post:marker, Tullett Prebon's** straight-through processing service for post-trade notifications.
- Contact Us**
Displays the business contacts and the technical support numbers.
- Reference Guide Help**
To display a menu of help topics on **Data:marker**.
- Change Password**
Allows the user to change the password with which they log on to **Data:marker**.
- Log Off**
Log off from **Data:marker**, and return to Log On screen.

E-mail:

TradingSystemsServices@tullib.com

Telephone:

[+44] (0)20 7827 3702



Data:marker

Quick Reference Sheet

Functionality page 2




Adding a View to custom Homepage

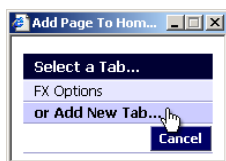
You can build up a custom set of pages in the **Homepage** section. Initially a default homepage will already be set up to view when you first enter the product after Log On.

There are six types of pages that can be saved to the **Homepage** section:

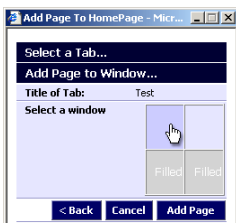
- Commentary
- Dealing Prices
- Indicative Data
- Green Screen Dealing Prices
- Historical Graphs
- Historical Data tables

To add a page to the **Homepage** section:

1. Display the page that you would like to add to the **Homepage** section.
2.  Click on the **Add to Homepage** icon which is situated at the top right of the window.
3. A pop-up dialog appears (see below left) to select where to add the page, either add the page to an existing layout tab or create a new homepage tab.



4. If you choose to add a new tab the **New Tab Details** dialog appears (see right). In this dialog you must name the tab, then choose a layout for the tab, you can have one to four pages on one tab, these grids allow you to select from different layouts available. Finally click on the **Add tab** button.
5. Then the **Add Page to Homepage** dialog appears. Choose where on the grid you would like to place your selected page in the layout. The dialog will show which parts of the layout are already filled, but these areas can still be overwritten.



6. Click on the **Add Page** button.

Connection Problem Handling

For problems encountered when using this product contact the **Tullett Prebon Trading Systems services** in London between 0630 and 1830 on [+44] (0)20 7827 3702.

Common Log On Problems

Please ensure that you have Microsoft Internet Explorer 5.5 or higher version SP2 by choosing About Internet Explorer from the Help menu.

If **Internet access is via a proxy server and a Java plug-in is installed** the Java plug-in configuration will need to be manually changed. To do this open the **Java plug-in** control panel, select the **Proxies** tab and deselect the **Use browser settings** tick box. Enter the proxy details into the **No proxy host** text box. Proxy information should be in the following format: **http = [proxy server name] : [port number]**

The **Microsoft Java virtual machine comes with all Windows operating systems except Windows XP**. The Microsoft Java virtual machine is no longer available from Microsoft. This is discussed on the Microsoft <<http://www.microsoft.com/java>> web site.

If you are running **MS Windows XP** and service pack 1 is not already installed then you will need to install the Java plug-in from Sun Microsystems. All major versions of the Java Virtual Machine are supported except for versions 1.3.1_03 and 1.4.0xx of the SUN JVM.

Proxy Settings

If you are accessing the internet through a Microsoft Proxy Server then please ensure that you have Microsoft Proxy Client installed and port 5463 enabled on the Proxy Server and any Firewall.

Alternatively, If port 5463 cannot be accessed, please ensure that HTTPS is enabled through the Firewall and Proxy server via port 443

Forgotten your Password?

Contact the **Tullett Prebon Trading System services** in London on [+44] (0)20 7827 3702 (available from 0630 to 1830 Monday to Friday).

Or email TradingSystemServices@tullib.com

Initial Connection cannot be made

Please check with your internal IT Department that access to this site has not been barred, and that your Internet Access is functioning correctly.

Client Version
July 2005 Edition
Copyright ©
Collins Stewart Tullett plc.

